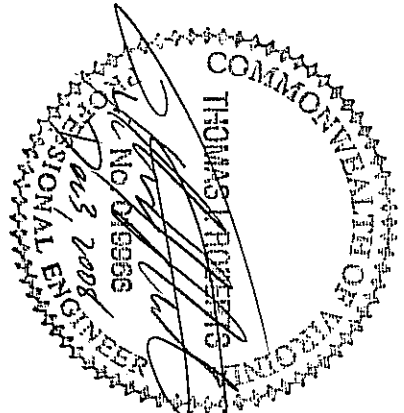
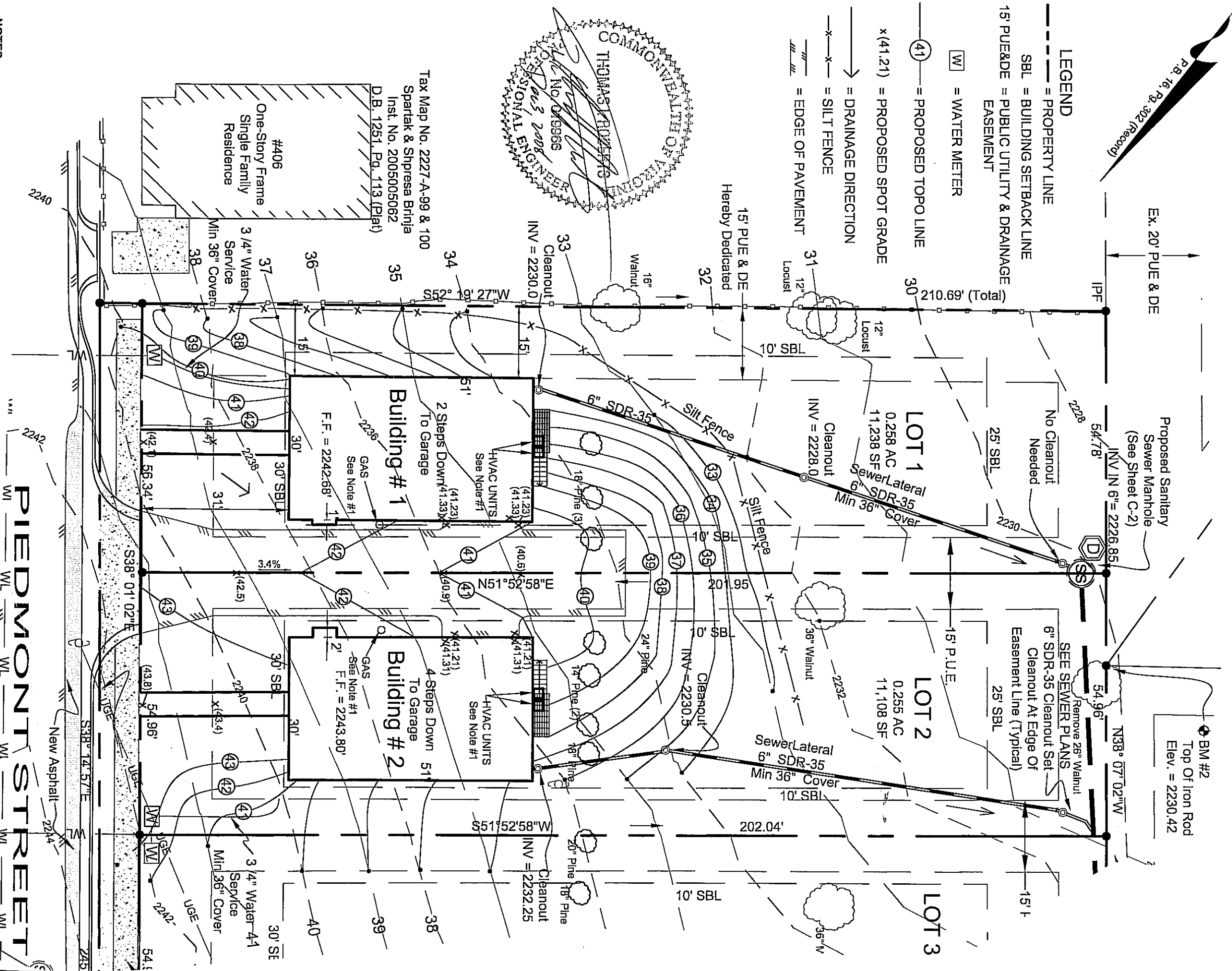


P.B. 16, P. 9, 302 (Record)

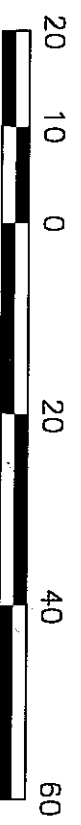
- LEGEND**
- = PROPERTY LINE
 - - - = BUILDING SETBACK LINE
 - - - = PUBLIC UTILITY & DRAINAGE EASEMENT
 - ☐ = WATER METER
 - ④1 = PROPOSED TOPO LINE
 - x(41,21) = PROPOSED SPOT GRADE
 - = DRAINAGE DIRECTION
 - x-x- = SILT FENCE
 - ||||| = EDGE OF PAVEMENT



Tax Map No. 2227-A-99 & 100
 Spartak & Shpresa Brinja
 Inst. No. 2005005062
 D.B. 1251, Pa. 113 (Plat)



- NOTES:**
1. SEE BUILDING PLAN SHEETS #2 & #3 FOR REQUIRED LOCATION OF OUTSIDE PROPANE BOTTLES AND AC UNITS.
 2. SEE BUILDING PLANS FOR BUILDING DIMENSIONS
 3. INSTALL SILT FENCE BEFORE STARTING EXCAVATION. ALL DISTURBED AREAS SHALL BE SEEDED AND MULCHED WITH 48 HOURS OF REACHING FINAL GRADE.
 4. 5' WIDE CONCRETE WALKS IN FRONT FOR BOTH BUILDINGS. NO STEP TO FRONT PORCH
 5. REMOVE ROW OF OVERGROWN WHITE PINE TREES.
 6. FLOOR TO AREA RATIOS (FAR) FOR BOTH LOTS IS 0.21 (GROSS FLOOR AREA 2,388 SF/LOT SIZE 11,238 SF OR 11,108 SF)
 7. LOT COVERAGE FOR BOTH LOTS 0.23 (1ST FLOOR, GARAGE, REAR PORCH, SIDEWALK & DRIVEWAY 2, 609 SF/ 11, 238 SF OR 11,108 SF)



DESIGNED BY: JTR
 DRAWN BY: NTS
 CHECKED BY: JTR
 DATE: 12-02-09
 SCALE: AS SHOWN
 REVISIONS:
 PROJECT#: 2009055

PIEDMONT PLACE
 LOTS 1 AND 2
 Town of Blacksburg, Virginia

Roberts Engineering, Inc.
 1601 South Main Street, Blacksburg, Virginia 24060
 Phone: 540-533-9024; Fax: 540-533-9020